

OMAXE CHOWK

A Monumental Retail Marvel



Omaxe Chowk

A once in a lifetime retail opportunity spread across 4.5+ acres in the heart of Asia's oldest, largest and busiest business shopping destination – Chandni Chowk

- The project boasts of the largest food court in India 'Dawatpur' with 2000+ seating capacity
- Multi-level car parking for 2200+ cars
- Weather controlled environment
- Exclusive pick-up and drop-off zone at each level
- Proposed special entry to the first floor from the Chandni Chowk Metro Station
- Launched in 2019, project is nearing possession
- Daily footfall of 4-6 lakh visitors in Chandni Chowk
- The one-stop destination for jewellery, apparel, bridal & food

Major Project Highlights

- Iconic Architecture
- In the heart of Asia's Oldest, Largest & Busiest wholesale market
- Public Private Partnership (PPP) Model
- Part of Redevelopment Project to protect Chandni Chowk's rich cultural heritage & history
- It is the largest development in Chandni Chowk

70%
LEASED
OUT

50%
UNDER FIT-
OUT

60%
IN DESIGN
PHASE

70+
BRANDS
ON BOARD

OC
APPLIED

The Retail Masterpiece is 'Nearing Possession'!

THIS WEDDING SEASON INDIA WILL SHOP

FIT-OUT STARTED

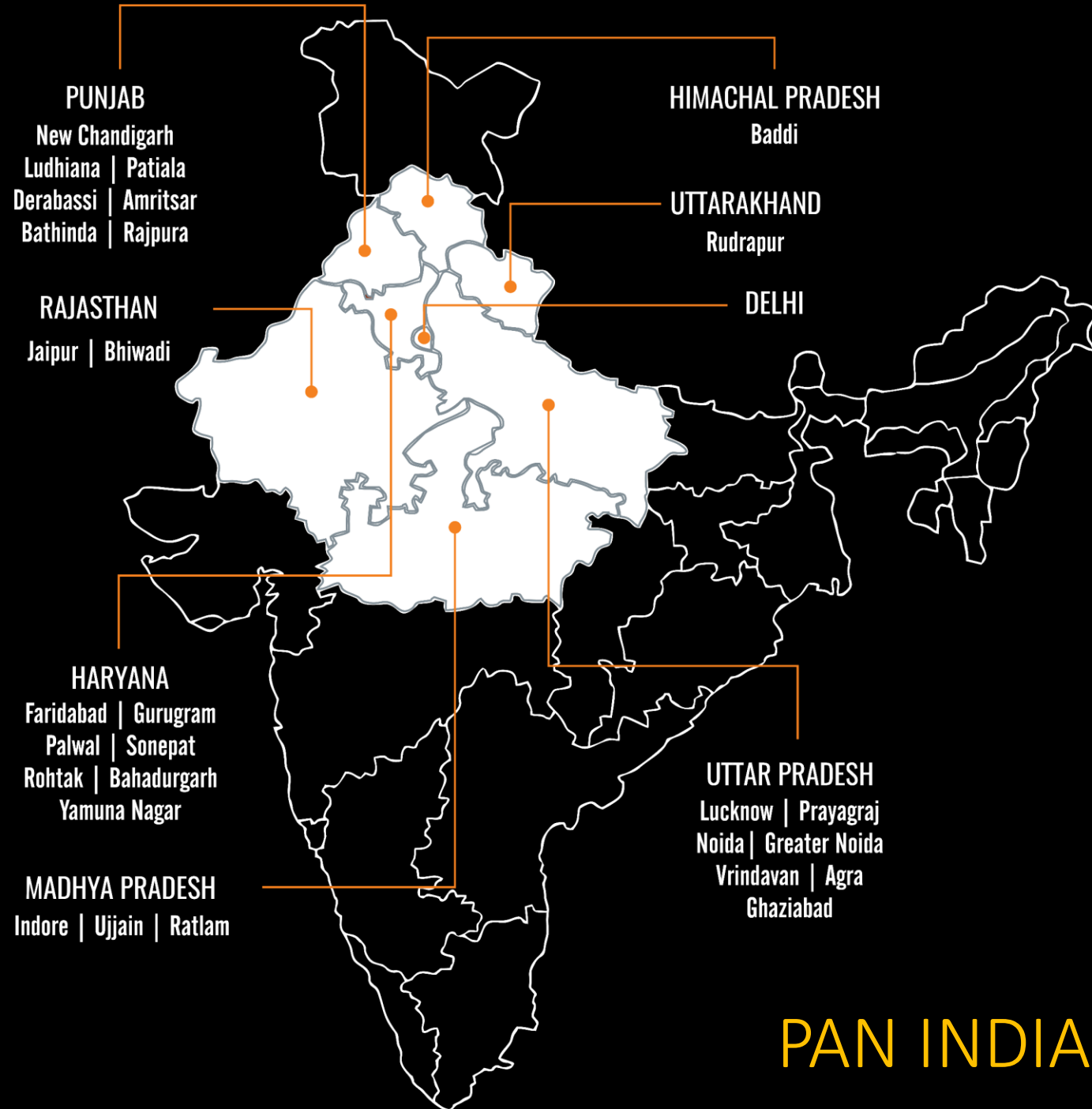




ACTUAL IMAGES

Why Omaxe?

- Trusted Brand
- Legacy of more than 35 years
- Delivery Track Record – 132 million sq.ft. Delivered
- Pan India Presence - 8 States, 29 Cities
- Happy Customer Base of 5.4 lakh people
- Landmark Projects at Landmark Locations
- Endeavour to make unorganized bazaars organized
- Listed on NSE & BSE
- Quality of Construction



PAN INDIA PRESENCE

The Next Generation Leading the Way Forward **Managing Director Omaxe Ltd. - Mr. Mohit Goel**

Mr. Mohit Goel is the Managing Director of Omaxe Ltd. Formerly, as the CEO of the company, he displayed exceptional business acumen during a time when the real estate sector lacked traction and faced tepid demand. He implemented structural changes that led to a remarkable turnaround for the company. Mohit's inclination towards fresh and innovative ideas resulted in the execution of various customer-centric and conceptual initiatives within Omaxe.

Under his leadership, Omaxe's strategic focus was streamlined, and the company made strategic acquisitions to enhance its land base, reducing debt and improving its capital structure, thereby boosting returns. Additionally, Mr. Goel served as the North Zone Head of Youth CREDAI, a prestigious association of real estate developers, where he was credited with initiating key reforms and fostering collaboration among industry leaders and influencers through regular meetings and events.

Beyond his role in Omaxe and the real estate sector, he has been a champion of entrepreneurship. He founded and nurtured promising startups and his brainchild, 'The Vault' tele-series, served as a platform to promote and encourage new business ventures. In 2015, he founded Supplified, an e-commerce marketplace catering to construction material needs.



The Next Generation Leading the Way Forward Executive Director Omaxe Ltd. - **Mr. Jatin Goel**

As the Executive Director at Omaxe Ltd., Jatin Goel brings a dynamic blend of expertise in real estate, finance, and a genuine passion for crafting spaces that inspire thriving communities.


Having done his masters from the prestigious London School of Economics, Jatin's academic foundation underpins his strategic insights into the complex world of real estate. Together with his brother Mohit Goel, he represents the new generation leadership that builds on the legacy set by their father, Mr. Rohtas Goel, the visionary founder and chairman of Omaxe Ltd.

Guided by an unwavering commitment to innovation, integrity, and excellence, Jatin spearheads the Design & Development arm of Omaxe Ltd. His visionary approach, coupled with a keen understanding of evolving market trends, ensures that each Omaxe project transcends conventional boundaries, delivering spaces that resonate with modern lifestyles.

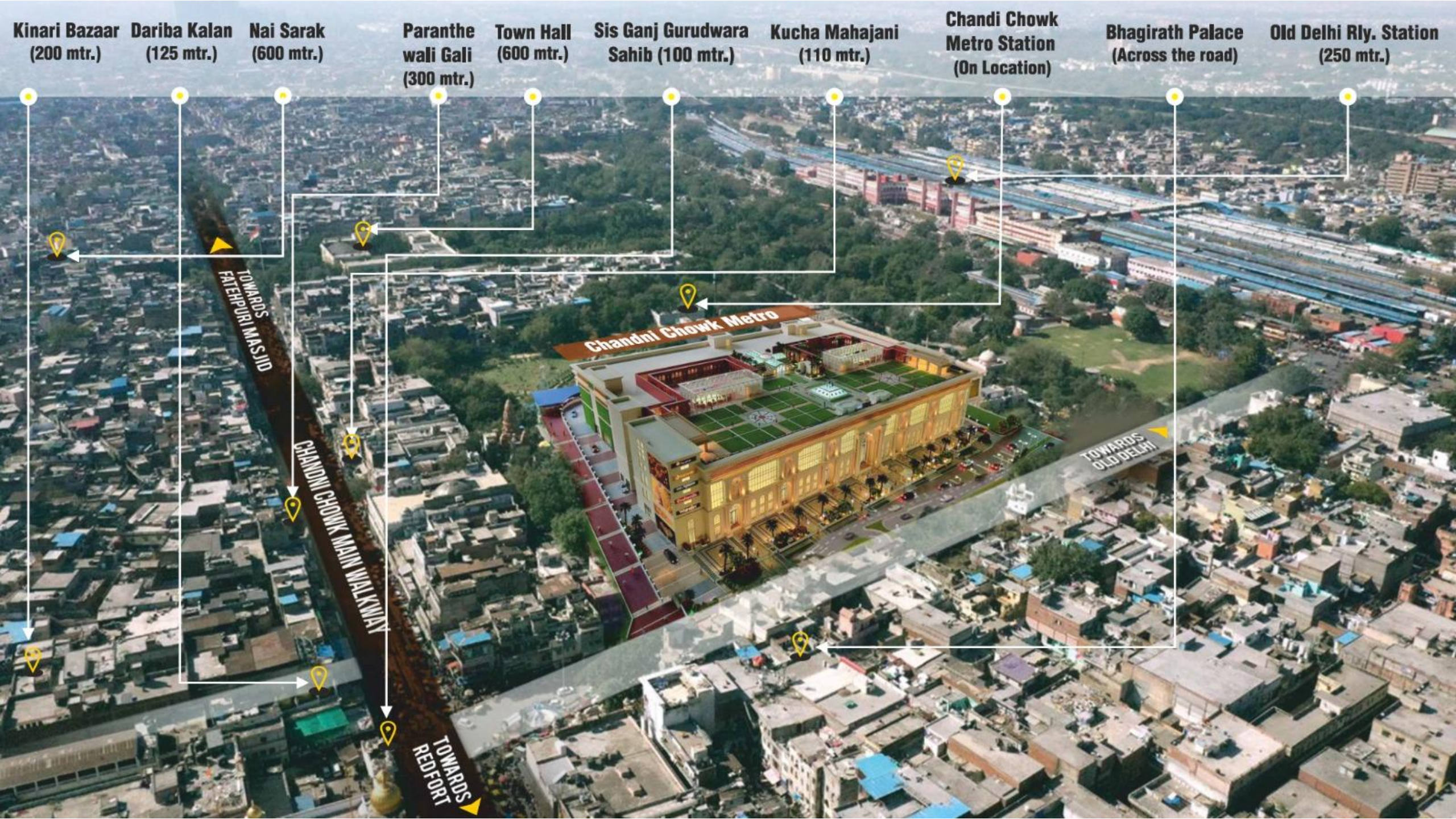
Under Jatin's leadership, Omaxe Ltd. continues to shape the real estate landscape in North India across 29 cities and 8 states. His acute attention to detail, creative acumen, and dedication to fostering vibrant communities define his approach to business. Through meticulous planning and design, he envisions spaces that don't just offer homes but create holistic living experiences.

Jatin's commitment to elevating the quality of urban life drives him to contribute to Omaxe's legacy of transformative projects, marking him as an influential figure in the real estate arena.



The background of the image is an aerial night view of a city, specifically Chandni Chowk. The central focus is a large, modern building complex with a prominent facade of arched windows and doorways. The building is illuminated from within, and the surrounding area is filled with other buildings and streetlights, creating a vibrant urban scene.

A Once in 300 Years
Opportunity – Located in the
heart of Chandni Chowk



Kinari Bazaar
(200 mtr.)

Dariba Kalan
(125 mtr.)

Nai Sarak
(600 mtr.)

Paranthe wali Gali
(300 mtr.)

Town Hall
(600 mtr.)

Sis Ganj Gurudwara Sahib
(100 mtr.)

Kucha Mahajani
(110 mtr.)

Chandni Chowk Metro Station
(On Location)

Bhagirath Palace
(Across the road)

Old Delhi Rly. Station
(250 mtr.)

TOWARDS
FATEHPURI MASJID

CHANDNI CHOWK MAIN WALKWAY

TOWARDS
REDFORT

Chandni Chowk Metro

TOWARDS
OLD DELHI

Situated Amidst Cultural & Historical Landmarks



Red Fort



Jama Masjid



Fatehpuri Masjid



Sis Ganj Gurudwara

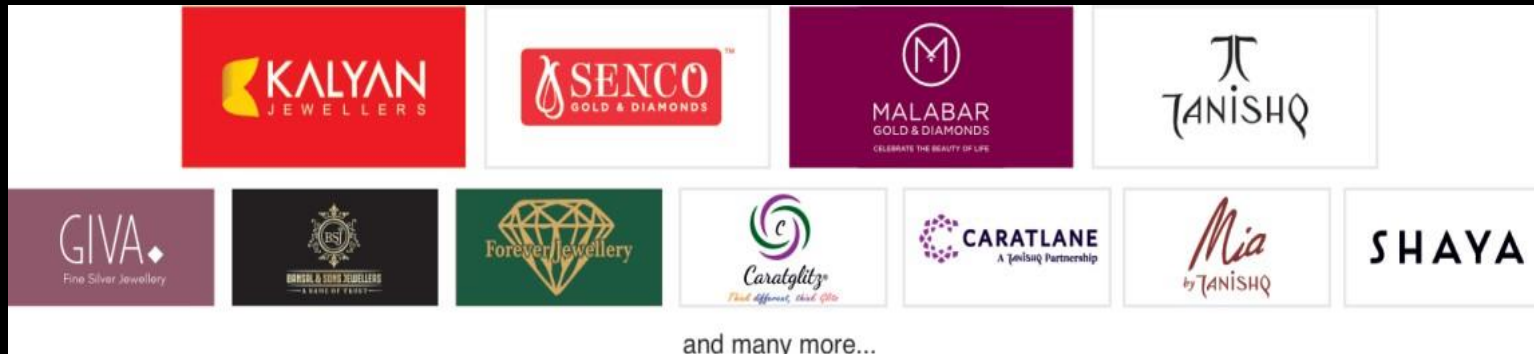


Old Delhi Railway Station



Digambar Jain Lal Mandir

Experience the allure of the Jewel Court Section where luxury meets sophistication



and many more...

JEWEL COURT

Step into a world of bridal dreams and exquisite designs at Omaxe Chowk's bridal haven



		and many more...			

BRIDAL COURT

Dawatpur – Largest Food Court in India

- 2000+ Seating Capacity
- Plethora of local and international food brands to choose from
- Now enjoy all local flavors of Chandni Chowk under one roof



Dawatpur – F&B Brands Onboard

				
				
				
				
				
				
				
				and many more...

A Masterpiece with utmost convenience

- Multi-level stack car parking with hydraulic lifts
- Proposed direct entry to the first floor from Chandni Chowk Metro Station
- Exclusive pick-up and drop-off zone at each level
- Dedicated loading and unloading area

Multi-Level Car Parking

Chandni Chowk attracts 4-6 lakh visitors daily and is a parking nightmare. Omaxe Chowk will offer the customers a surreal & seamless retail experience by providing a state-of-the-art multi level car parking.

- Parking for 2200+ Cars
- Parking for 81 Heavy Motor Vehicles

Exclusive Pick-up & drop-off at each level

For the FIRST TIME, there would be a pick-up and drop-off zone at each level of a retail masterpiece thereby ensuring seamless movement & connectivity.

Proposed Direct
Entry to First
Floor from
Chandni Chowk
Metro Station



पुरानी दिल्ली का नया चौक

*Dekha
Kya?*

Don't miss the chance of becoming a part of history!